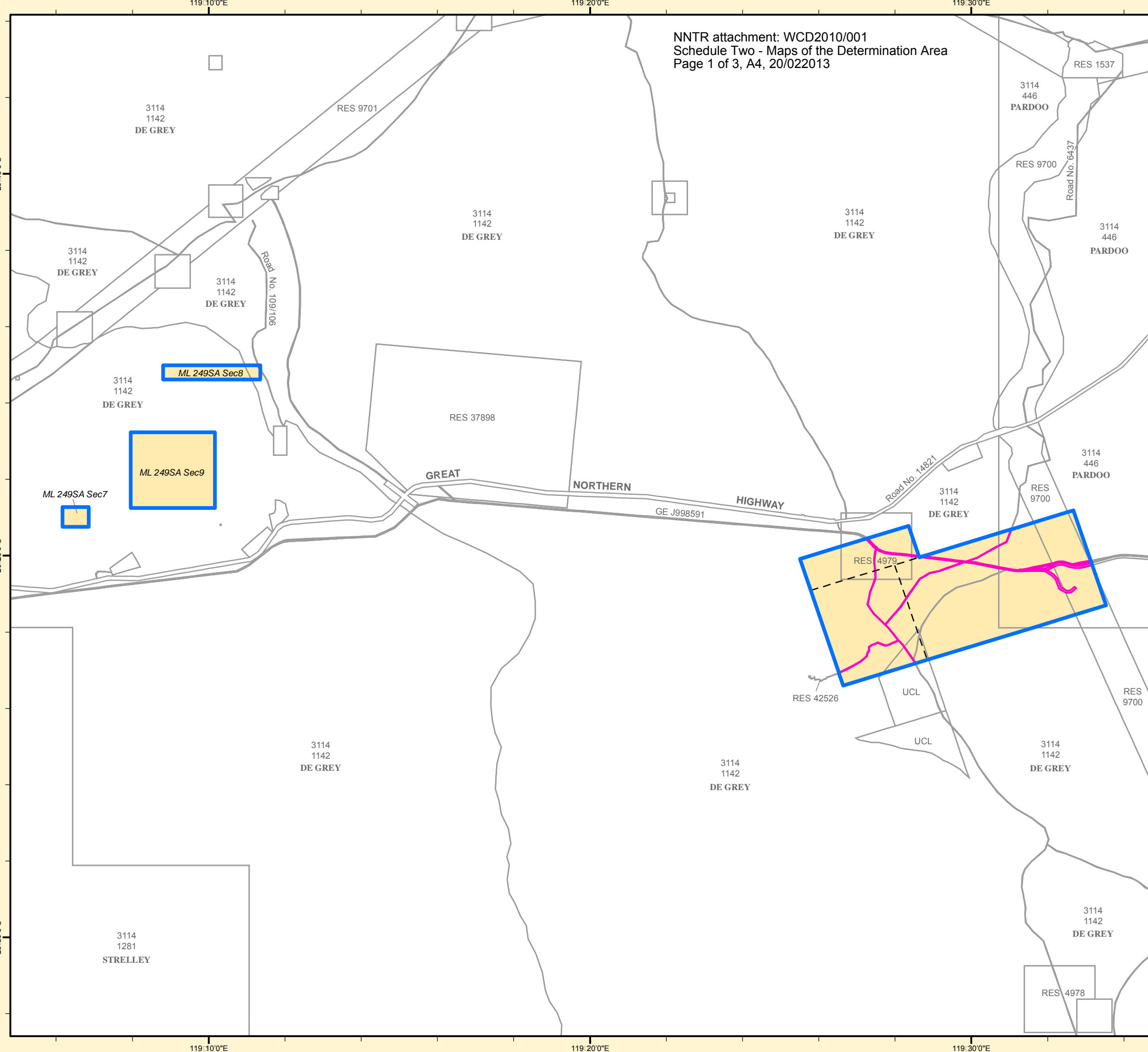
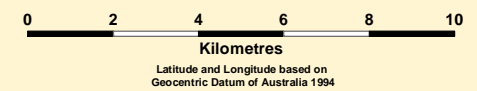


NGARLA (MT GOLDSWORTHY LEASES) DETERMINATION OF NATIVE TITLE WAD 6185 of 1998 SCHEDULE 2

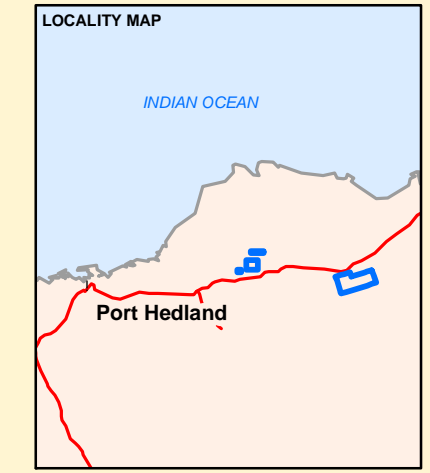


LEGEND

- DETERMINATION AREA
- AREAS WHERE NATIVE TITLE EXISTS - Subject to paragraphs 5, 6 and 9, areas where the native title comprises the rights set out in paragraph 4 of the Determination
- UNCLAIMED AREAS - Second Schedule - Previous exclusive possession acts which are excluded from the Determination Area pursuant to s.61A NTA



DATA SOURCES
 Cadastral and Tenure information sourced from Landgate Spatial Cadastral Database (SCDB).
 Administrative boundaries are sourced from the Landgate Administrative Boundaries Dataset.
 Topographical data sourced from the PSMA Dataset.
 Road names sourced from Landgate Road Centreline Dataset.
 Mining Tenement data sourced from DMP. Data enquires contact mtd.dd@dmp.wa.gov.au
 Petroleum data sourced from DMP. Data enquires contact petroleum.mapping@dmp.wa.gov.au
 Coastlines and shorelines are interpreted from aerial photography or recorded from ground surveys.
 Aerial photographic images sourced from Landgate orthorectified digital mosaics.
 250K raster data Commonwealth of Australia (Geoscience Australia) 2008.
 Local Authorities terminate at Low Water Mark (LWM) unless otherwise specified.
 Pastoral Leases terminate 40 metres above High Water Mark (HWM) unless otherwise specified.
 Islands shown are Unallocated Crown Land (UCL) unless otherwise specified.
 All referenced Deposited Plans and Diagrams are held by the Western Australian Land Information Authority, trading as Landgate.
 This map is indicative only.



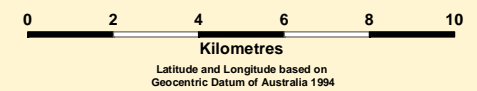
DISCLAIMER
 For informational purposes only. This map is a pictorial representation of data extracted from Landgate Datasets and is intended to be an overview of general geospatial information.
 Waterlines shown on this map do not necessarily depict an exact cadastral boundary.
 Native title application boundaries interpolated from descriptions held by the National Native Title Tribunal (NNTT) and Federal Court.
 Reference should be made to the NNTT for confirmation of this boundary for any legal purposes.
 In the event of any discrepancy between the written application boundary description and the areas depicted on this map the written description shall take preference as the maps and/or enlargements are indicative only.

**NATIVE TITLE SPATIAL SERVICES
 PRODUCED 20/02/2013**

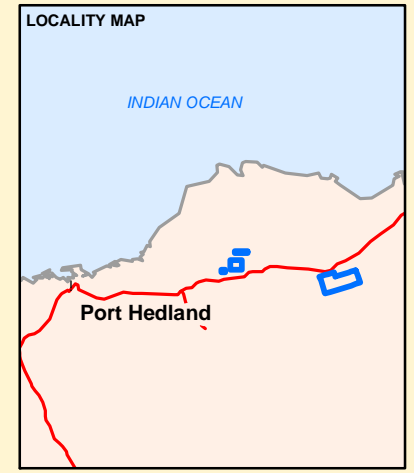
NGARLA (MT GOLDSWORTHY LEASES) DETERMINATION OF NATIVE TITLE WAD 6185 of 1998 SCHEDULE 2

LEGEND

- DETERMINATION AREA**
- AREAS WHERE NATIVE TITLE EXISTS -**
 Subject to paragraphs 5, 6 and 9, areas where the native title comprises the rights set out in paragraph 4 of the Determination
- UNCLAIMED AREAS -**
 Second Schedule - Previous exclusive possession acts which are excluded from the Determination Area pursuant to s.61A NTA



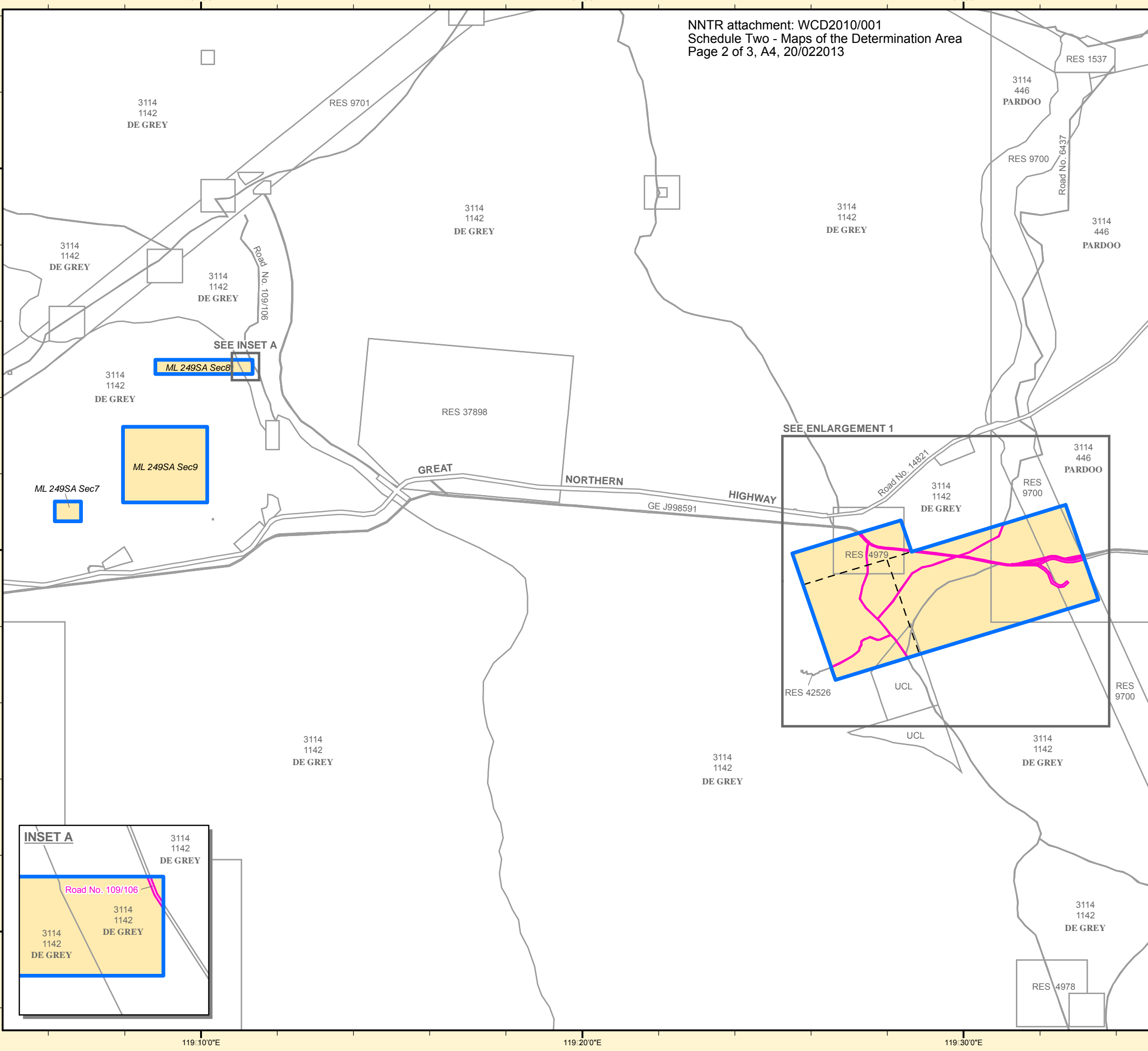
DATA SOURCES
 Cadastral and Tenure information sourced from Landgate Spatial Cadastral Database (SCDB).
 Administrative boundaries are sourced from the Landgate Administrative Boundaries Dataset.
 Topographical data sourced from the PSMA Dataset.
 Road names sourced from Landgate Road Centreline Dataset.
 Mining Tenement data sourced from DMP. Data enquires contact mtd.dd@dmp.wa.gov.au
 Petroleum data sourced from DMP. Data enquires contact petroleum.mapping@dmp.wa.gov.au
 Coastlines and shorelines are interpreted from aerial photography or recorded from ground surveys.
 Aerial photographic images sourced from Landgate orthorectified digital mosaics.
 250K raster data Commonwealth of Australia (Geoscience Australia) 2008.
 Local Authorities terminate at Low Water Mark (LWM) unless otherwise specified.
 Pastoral Leases terminate 40 metres above High Water Mark (HWM) unless otherwise specified.
 Islands shown are Unallocated Crown Land (UCL) unless otherwise specified.
 All referenced Deposited Plans and Diagrams are held by the Western Australian Land Information Authority, trading as Landgate.
 This map is indicative only.



DISCLAIMER
 For informational purposes only. This map is a pictorial representation of data extracted from Landgate Datasets and is intended to be an overview of general geospatial information.
 Waterlines shown on this map do not necessarily depict an exact cadastral boundary.
 Native title application boundaries interpolated from descriptions held by the National Native Title Tribunal (NNTT) and Federal Court.
 Reference should be made to the NNTT for confirmation of this boundary for any legal purposes.
 In the event of any discrepancy between the written application boundary description and the areas depicted on this map the written description shall take preference as the maps and/or enlargements are indicative only.

**NATIVE TITLE SPATIAL SERVICES
 PRODUCED 20/02/2013**

Street address: 1 Midland Square, Midland, WA 6056
 Postal address: PO Box 2222, Midland, WA 6936
 Tel: (08) 9273 7391 Fax: (08) 9273 7615
 email: nts@landgate.wa.gov.au
 Internet: www.landgate.wa.gov.au

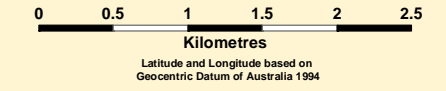


INSET A

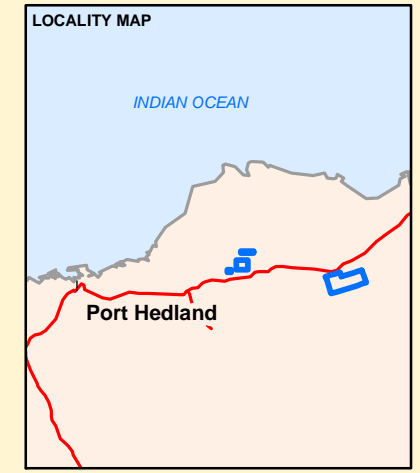
NGARLA (MT GOLDSWORTHY LEASES) DETERMINATION OF NATIVE TITLE WAD 6185 of 1998 SCHEDULE 2 Enlargement 1

LEGEND

- DETERMINATION AREA**
- AREAS WHERE NATIVE TITLE EXISTS -**
Subject to paragraphs 5, 6 and 9, areas where the native title comprises the rights set out in paragraph 4 of the Determination
- UNCLAIMED AREAS -**
Second Schedule - Previous exclusive possession acts which are excluded from the Determination Area pursuant to s.61A NTA



DATA SOURCES
 Cadastral and Tenure information sourced from Landgate Spatial Cadastral Database (SCDB).
 Administrative boundaries are sourced from the Landgate Administrative Boundaries Dataset.
 Topographical data sourced from the PSMA Dataset.
 Road names sourced from Landgate Road Centreline Dataset.
 Mining Tenement data sourced from DMP. Data enquires contact mtd.dd@dmp.wa.gov.au
 Petroleum data sourced from DMP. Data enquires contact petroleum.mapping@dmp.wa.gov.au
 Coastlines and shorelines are interpreted from aerial photography or recorded from ground surveys.
 Aerial photographic images sourced from Landgate orthorectified digital mosaics.
 250K raster data * Commonwealth of Australia (Geoscience Australia) 2008.
 Local Authorities terminate at Low Water Mark (LWM) unless otherwise specified.
 Pastoral Leases terminate 40 metres above High Water Mark (HWM) unless otherwise specified.
 Islands shown are Unallocated Crown Land (UCL) unless otherwise specified.
 All referenced Deposited Plans and Diagrams are held by the Western Australian Land Information Authority, trading as Landgate.
 This map is indicative only.



DISCLAIMER

For informational purposes only. This map is a pictorial representation of data extracted from Landgate Datasets and is intended to be an overview of general geospatial information.
 Waterlines shown on this map do not necessarily depict an exact cadastral boundary.
 Native title application boundaries interpolated from descriptions held by the National Native Title Tribunal (NNTT) and Federal Court.
 Reference should be made to the NNTT for confirmation of this boundary for any legal purposes.
 In the event of any discrepancy between the written application boundary description and the areas depicted on this map the written description shall take preference as the maps and/or enlargements are indicative only.

NNTR attachment: WCD2010/001
 Schedule Two - Maps of the Determination Area
 Page 3 of 3, A4, 20/022013

**NATIVE TITLE SPATIAL SERVICES
PRODUCED 20/02/2013**

Street address: 1 Midland Square, Midland, WA 6056
 Postal address: PO Box 2222, Midland, WA 6936
 Tel: (08) 9273 7391 Fax: (08) 9273 7615
 email: nts@landgate.wa.gov.au
 Internet: www.landgate.wa.gov.au

